



PCM

**£1,800 PCM**

**Sugar Loaf Walk**

London, E2 0JQ



Set within a secure gated development just a few moments from Bethnal Green Underground Station is this 1 bedroom apartment with secure parking for 1 car.

The property features a good size reception room with wood flooring, separate fitted kitchen, family bathroom, ample storage and a good size double bedroom.

Located just a few moments walk from Bethnal Green Underground Station with Victoria Park, Shoreditch and Broadway Market all close by.

Offered furnished.

Council Tax: Band C

5 weeks deposit: £2076.92

12 month straight tenancy

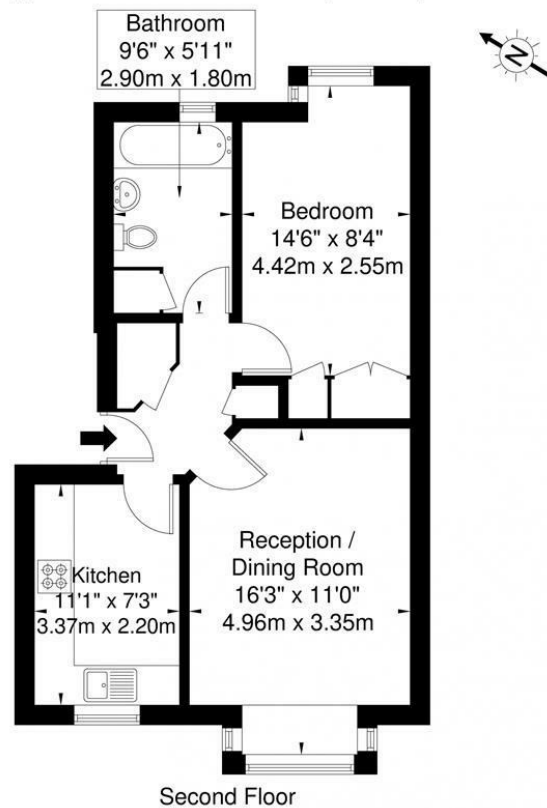






## Sugar Loaf Walk, E2 0JQ

Approx. Gross Internal Area = 47.2 sq m / 508 sq ft



Ref

Copyright

**BLEU  
PLAN**

The Floor plan is not to scale and measurements and areas shown are approximate and therefore should be used for illustrative purposes only. The plan has been prepared in accordance with the RICS code of Measuring Practice and whilst we have confidence in the information produced it must not be relied on. If there is any aspect of particular importance, you should carry out or commission your own inspection of the property.  
Copyright © BLEUPLAN

Energy Efficiency Rating		
	Current	Potential
Very energy efficient - lower running costs		
(92 plus) A		
(81-91) B		
(69-80) C	74	77
(55-68) D		
(39-54) E		
(21-38) F		
(1-20) G		
Not energy efficient - higher running costs		
England & Wales	EU Directive 2002/91/EC	

Agents Note: Whilst every care has been taken to prepare these particulars, they are for guidance purposes only. All measurements are approximate and are for general guidance purposes only and whilst every care has been taken to ensure their accuracy, they should not be relied upon and potential buyers/tenants are advised to recheck the measurements

### OFFICE ADDRESS

88 Cheshire Street  
London  
E2 6EH

### OFFICE DETAILS

0207 739 6969  
info@peachproperties.com  
www.peachproperties.com